

TOM KIRK LIGHTING



Cintola Wall Light

Contemporary and refined, the Cintola Wall Light combines hand-blown glass with a precision-machined aluminium body. Available in a range of seven glass colours and three metal finishes, the wall light can also be mounted in two different orientations for maximum flexibility.

Lamp Specifications UK
220-240v 50Hz 3w G9 LED

Lamp Specifications USA
120v 60Hz 4.5w G9 Type
T LED

Product Weight
0.75KG / 1.65lb

Dimmable
Yes

Level of Protection
IP20

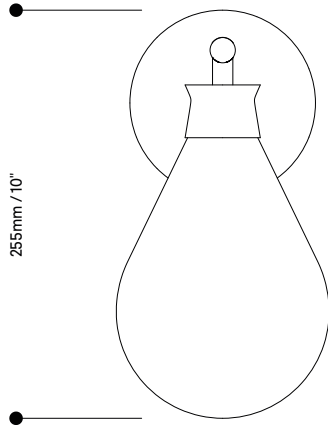
Luminous flux / CCT
UK – 250 Lumens 2700K
US – 400 Lumens 3000K

Materials
Hand-blown glass and anodised
or polished aluminium

Standards



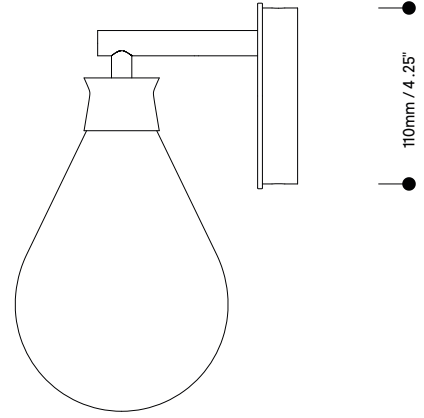
TOM KIRK LIGHTING



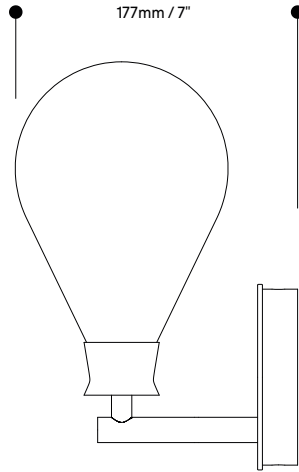
255mm / 10"



133mm / 5.25"



110mm / 4.25"

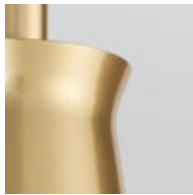


177mm / 7"

Metal Finishes



Polished aluminium



Satin gold



Amber



Turquoise



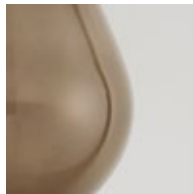
Olive



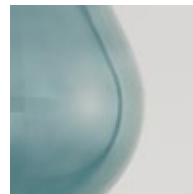
Frosted



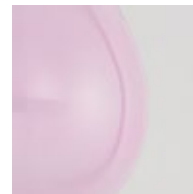
Satin bronze



Bronze



Smoke grey



Rose

Glass Colours