

TOM — KIRK LIGHTING

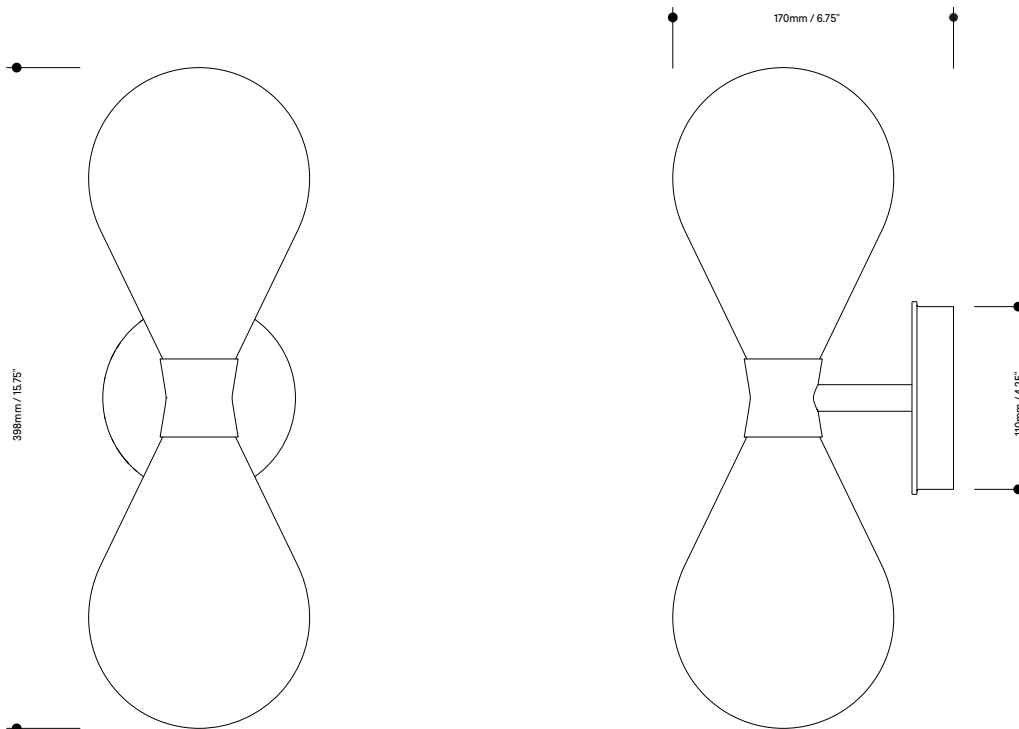
Cintola Wall Light Twin

A larger version of the Cintola Wall Light, the Twin adds vertical height and presence to the rounded profile of its sibling. Available in a range of standard and custom finishes, alongside a selection of complementary glass colours.



Cintola Wall Light Twin

Cintola Wall Light Twin



Lamp specifications UK
220-240v 50Hz 2 x 3w G9 LED

Lamp specifications USA
120v 60Hz 2 x 3w G9 Type T LED

Luminous flux / CCT
UK – 500lm 2700K
US – 600lm 2700K

Dimmable
Yes

Level of protection
IP20

Product weight
1kg / 2.2lb

Materials
Hand-blown glass and anodised
or polished aluminium

HS code
9405105000

Standards
UK CA CE

Metal finishes



Polished aluminium



Satin gold



Satin bronze

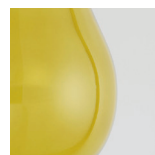
Glass colours



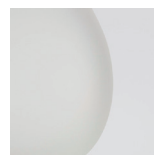
Amber



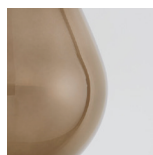
Turquoise



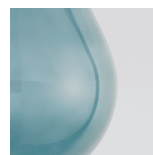
Olive



Frosted



Bronze



Smoke grey



Rose

